



B2ETECHNOLOGIES

**EDGE
GATEWAY
SERVER**

Edge

Business Server Platform

Executive Overview.....	3
The Solution.....	3
Proven.....	3
Internet Connection Sharing.....	4
Virus/Spam Protection.....	4
Multiple Connection Options.....	5
Network Security.....	5
Network Management.....	5
Network Management Breakdown.....	6
Change Management.....	6
Technical Features.....	7
Network Diagram Example.....	8
Graphs and Reports.....	8-10
Other Features.....	10
Hardware.....	11
Pricing.....	12

EXECUTIVE OVERVIEW

- The explosive growth of e-mail and web services this has created technical and management challenges for some IT departments. The medium of creating email accounts, maintaining user lists, trouble-shooting desktop and remote clients, monitoring servers, administering security, content filters and planning/deploying system upgrades, sometimes strain overburdened IT resources. Email management carries with it not only acquisition and operational costs (hardware, software, personnel, etc.) but also missed opportunity costs.
- VPN Overview - Transmitting information across the Internet is by nature an insecure method of transmitting data. More users are going mobile daily and VPN in general has gone and continues to evolve into a platform that provides compatibility for multiple client machines, ease of use for end users, and ease of administration. B2E has created a dynamic VPN solution to integrate offices directly with one another as well as link users remotely to their environments. B2E offers this all in one VPN integration with the edge server.
- Email Overview - Email is becoming more important each day as a method of communication. As a result choosing a mature and complete mail server for your business is critical. Organisations need a robust yet easy to manage mail system and reliable technical support from the system vendor.

THE SOLUTION

- B2E have built and now deliver an outsourced VPN, Secure Email, Web and File Server platform to its clients based on UNIX (FreeBSD). This platform and the architecture behind it delivers on the promise of a managed, scalable and cost effective outsourced solution named **Edge**.
- **Edge** is a fully managed and supported UNIX server located within your companies LAN (Local Area Network) environment. B2E is additionally responsible for client licensing, virus scanning and external network security.

PROVEN

- UNIX is a proven solution with several thousand servers installed and running at customer sites worldwide. The implementations range in size from several to multi-million user systems.
- Because of its reliable performance and standards based architecture, UNIX is utilised as the platform for a wide variety of services including Web based email for large ISPs, Unified Messaging for telecommunication companies, and SMS systems for wireless service providers. Additionally serves the messaging needs of corporate, government, and educational customers all over the world.

EDGE INTERNET CONNECTION SHARING

Internet connection sharing or just Internet sharing is a term used to describe the technique of allowing more than one computer to simultaneously access the Internet with a single or multiple connections.

When a computer is connected to the Internet the Internet Service Provider will provide a public IP address or IP address block which will allow it to communicate with other host computers elsewhere on the Internet. Public IP addresses are IP addresses which are routable via the Internet and are assigned via a central public organization to ensure that hosts on the Internet each have unique addresses.

Edge allows a single point of Internet Connection sharing. Users access the Internet securely whereby all Internet traffic coming back to the user first has to pass through the edge gateway firewall, thereby securing your users from outside hacking attacks.

Benefits of Internet sharing:

- Protect your data by putting your computers behind a firewall.
- Reduce costs of acquiring additional public IP addresses.
- Selectively enable users to access Internet services and resources.

VIRUS/SPAM PROTECTION

The damage caused by recent “worms” show how vulnerable email systems can be. **Edge** supports the use of third-party products to scan all incoming or outgoing messages for virus detection and content filtering. Our products use CLAM Anti Virus to run alongside the email server and provide a much more solid solution than stand alone SMTP based mail scanners.

Real time Black Hole List (RBL's) are dynamically updated lists of email offenders mail servers which the **Edge** product uses to determine whether the email might contain potential unsolicited email before the email is even scanned by anti-spam mechanisms.

The **Edge** system also provides flexible mail relaying options to control routing of legitimate messages.

Spam protection occurs on the B2E email servers before the email is delivered to **Edge Server** thus reducing bandwidth usage.

MULTIPLE CONNECTION OPTIONS

The power of **Edge** can be enabled through a variety of connectivity mediums using ADSL, wireless connections, leased lines or even virtual private networks.

Edge allows you to select the connectivity option that suites your current needs and budget.

- **ADSL** – A high speed always connected, terminating into an ADSL modem and connects to a **Edge** via a standard Ethernet crossover cable. Designed for those who require an instant access without associated call charges or leased line costs.
- **Leased line** – Permanent bandwidth service.
- **VPN** – Matching today's VPN requirements, **Edge** works in multiple VPN scenarios which enable ISP's to build a dynamic solution for their customers. These include running L2TP, IPSEC, and VPN tunnels.
- **Wireless** – A high speed always connected, cable free connection to your service provider.

NETWORK SECURITY

We fully realise the need for network security and have adopted a number of standard security measures across the network. These include:

- IP source destination port access-lists.
- Stateful based firewall rules.
- Peer to peer protocol protection.

The design of the corporate network is done with the use of private IP addresses which are not routable via the Internet in a private format. In order to allow Internet traffic to enter a customer's network NAT is used. Our engineers have a high level of expertise and technical know how around security in order to secure a customer's router or **Edge**.

NETWORK MANAGEMENT

The network incorporates a full range of network monitoring and management facilities which can be extended right down to the client side. These include:

- Fault monitoring services.
- Performance monitoring and analysis.

Various tools are employed to facilitate these processes and manage each component of the network. In addition we employ a number of network specialists who analyse the network statistics and recommend network design changes, strategies and identify undesirable network usage patterns.

NETWORK MANAGEMENT BREAKDOWN

Management Activities – Management activities are defined as activities where high-level skilled human intervention is required to achieve the service objectives.

Reporting – The data accumulated for the above services by the network management centre will be compiled into a report.

Network Report Analysis – Network analysis is a consulting service that provides not only operational data but also the interpretation thereof by high-level consultants thereby providing information which forms part of the business decision support system.

Fault Management – Allows for the provision of detection and automatic correction of critical faults and the handling (management) of these faults. Fault management also includes the generation of fault tickets for every incident that occurs ensuring that records are being kept of all events. Escalation of all faults to the highest level to minimise down time is also part of fault management. The help desk is the interface for fault acceptance (Service calls). Calls can be logged online on B2E's Error Logging Facility (ELF). <http://elf.b2e.co.za>

CHANGE MANAGEMENT

The change management process is fundamental to the successful delivery of the project. The process ensures that each change introduced to the project environment is appropriately defined, evaluated and approved prior to implementation. We make use of these tools to provide you with crucial decision making information.

The aim of the service is for you to determine whether the network is adding significant value to the business and contributing to the attainment of business objectives. To this end an executive summary containing an analysis of the network monitoring report will be attached to the report and presented in conjunction.

Aspects of the analysis could be but are not limited to network utilisation analysis, IP address management, design implications and capacity management.

TECHNICAL FEATURES

The change management process is fundamental to the successful delivery of the project.

Email – **Edge** enables a multi-domain, unlimited mail user service which creates a stable, scalable and inexpensive email solution.

Proxy – Squid Proxy offers high speed cached Internet access.

Firewall – Using “Packet Filer” the firewall module of **Edge** secures the internal network (LAN) from the external network (The Internet).

Routing – Complete NAT (Network Address Translation) gateway functionality gives internal users the additional security of using non-routable “private” IP addresses. NAT also protects the network by only exposing one IP address to the Internet. Multi branch connectivity and routing ability allows **Edge** to be deployed in a VPN environment.

Dynamic DNS – Over ADSL and wireless solutions, Dynamic DNS can be used for management and VPN solutions. B2E offers its own Dynamic DNS service with all **Edge** Servers.

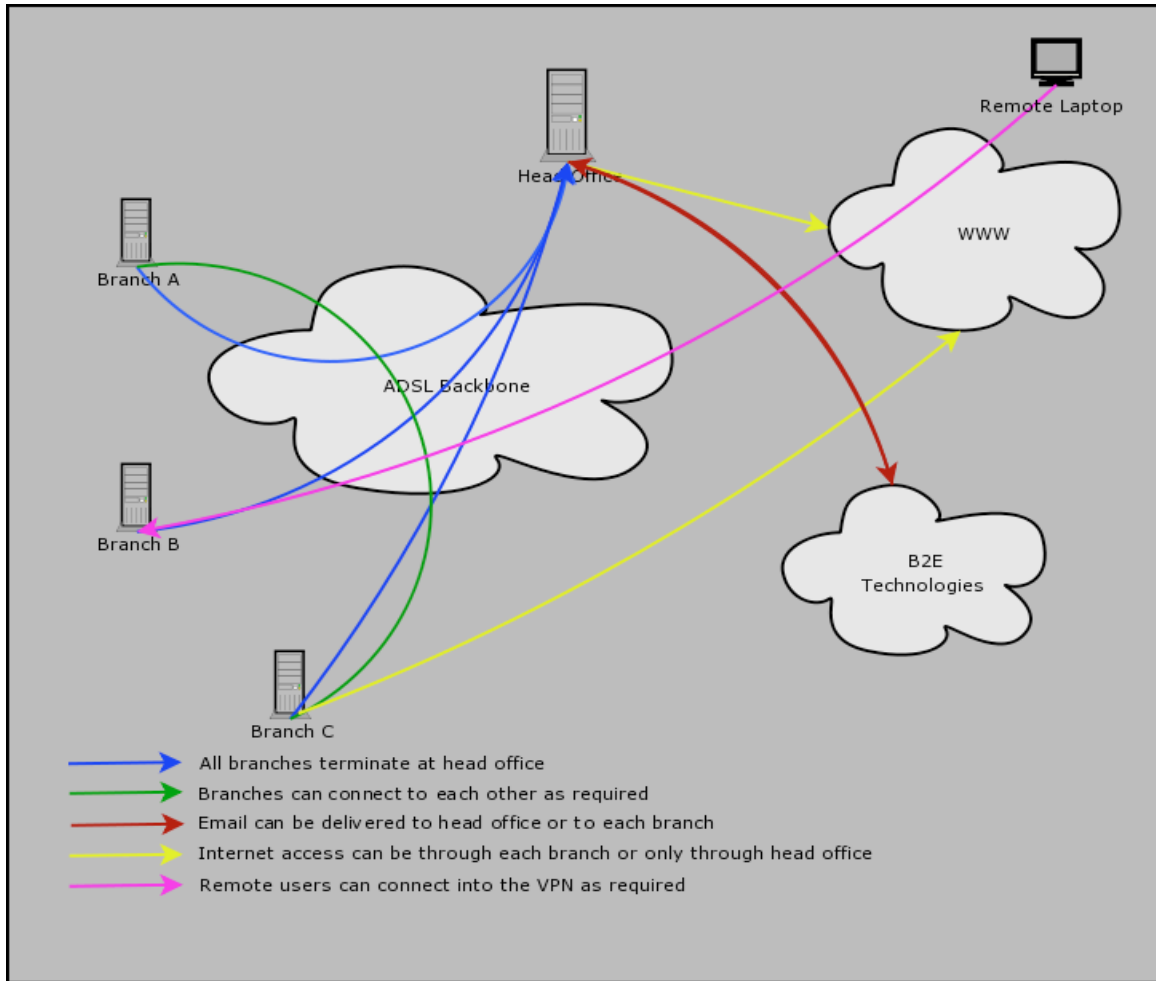
VPN – PPPOE VPN Solution using any of the following systems. L2TP, IPSEC over L2TP, OPEN VPN, Dynamic DNS integration and certificate authentication.

File Server – Edge server can run as a system file server and domain controller for user profiles and logon security. Access can be create for network shares for groups or the company.

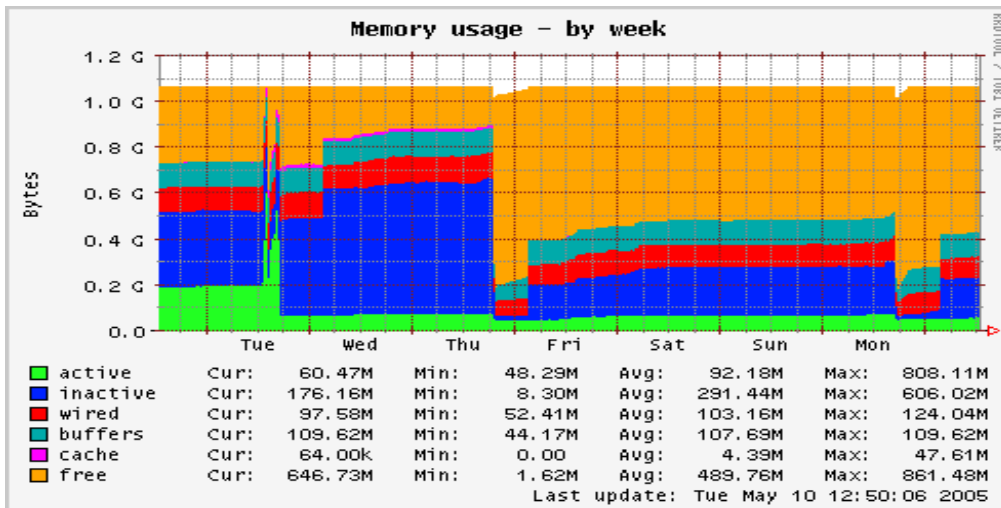
Logging and Reporting – Complete statistics available for the following:

- Proxy – IP and per user based logging for URL’s, time on-line and bandwidth consumed.
- Email – Mail traffic breakdown, email traffic analysis and time received.

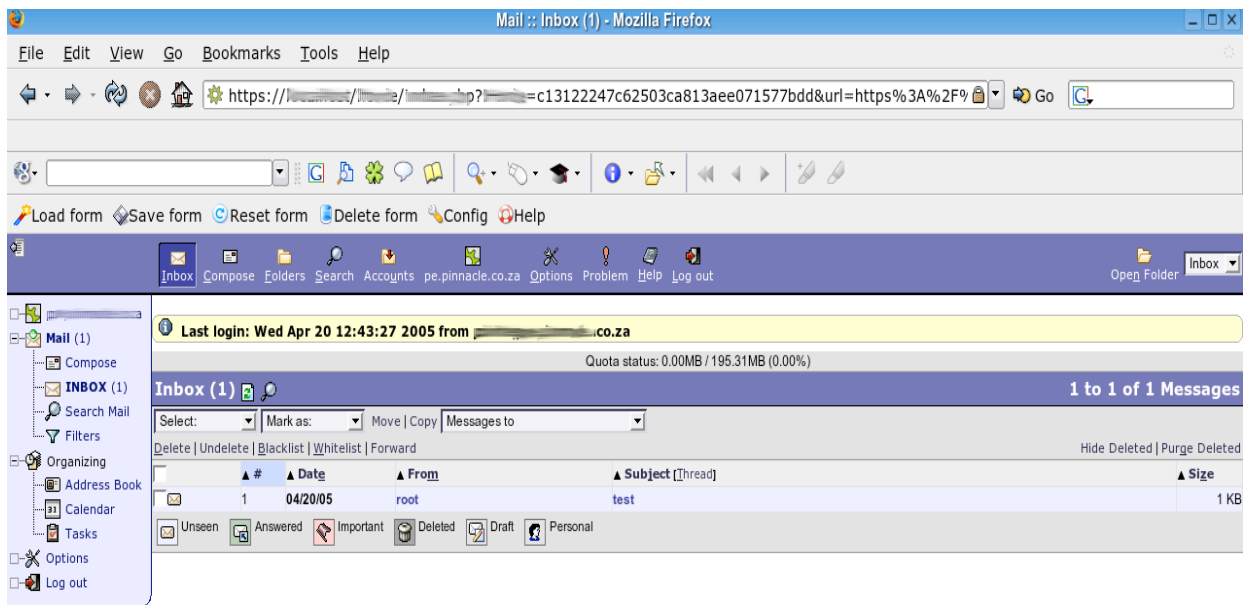
NETWORK DIAGRAM EXAMPLE



SYSTEM GRAPHS

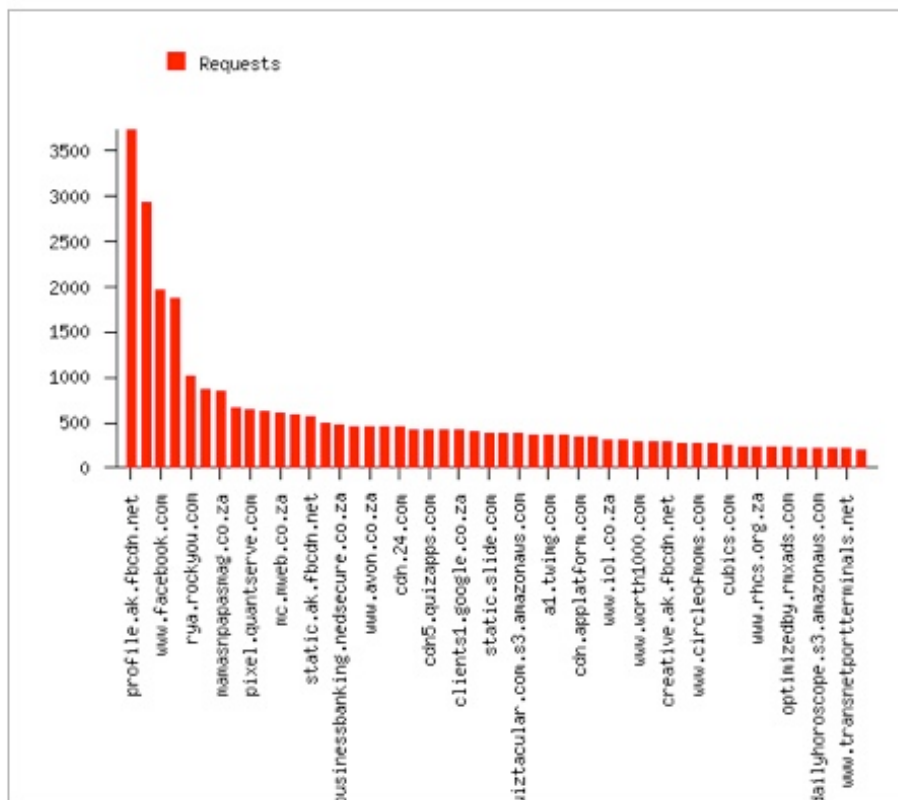


WEBMAIL INTERFACE



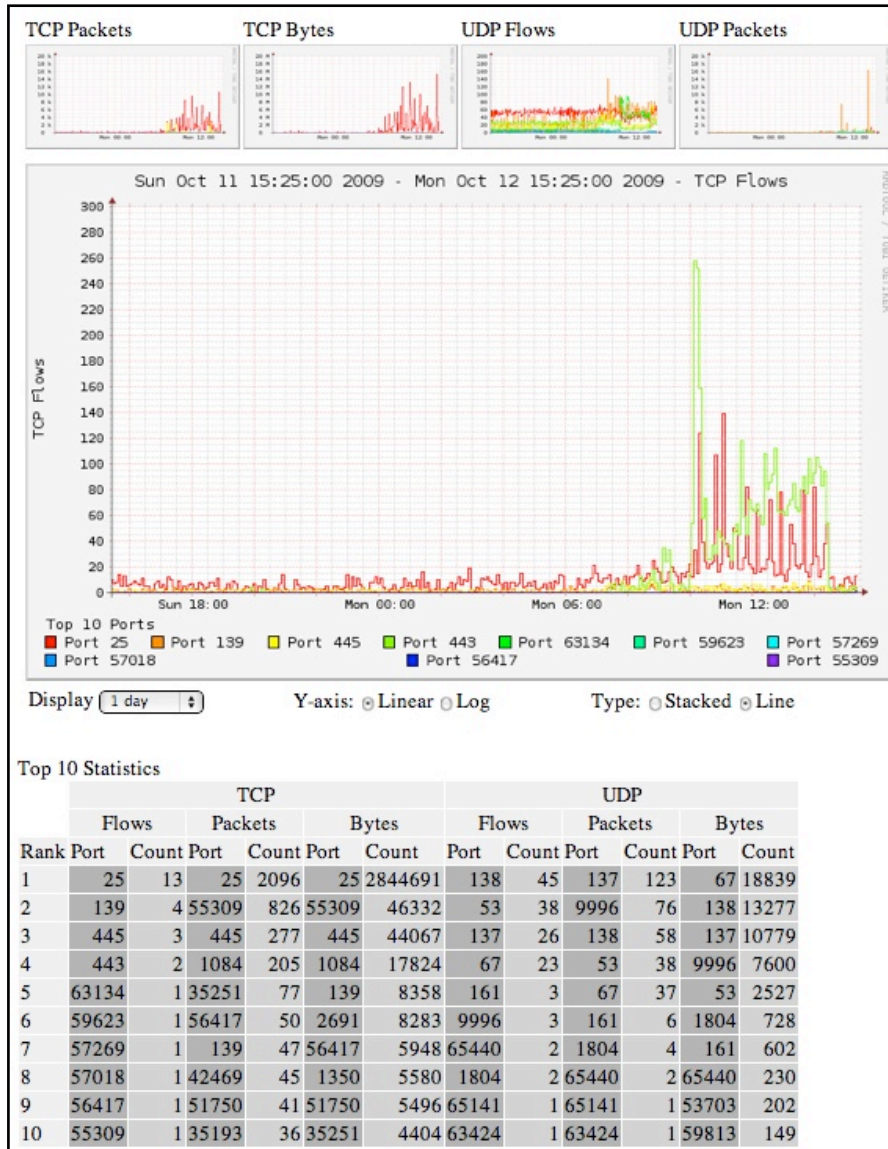
WEBSITE / PROXY REPORTS - Daily, Weekly and Monthly

- Get a detailed breakdown of the Top Sites and Top Users for Web browsing. Options are then available to block websites accordingly.



TRAFFIC BREAKDOWN AND DRILL DOWN

- The edge server will allow you to see all protocol utilisation as well as source and destinations overview. Historical and current data can be looked at.



HARDWARE

All hardware for the Edge Server is supplied and managed by B2E. Any hardware failures or damage to hardware, will be supported by B2E directly.

- *Any hardware failures may result in an entire unit replacement and not part replacement**
- * Hardware specifications may vary depending on solution and availability.**

PRICING

Please Contact Us for modular pricing

<http://www.b2e.co.za>

<mailto:sales@b2e.co.za>

0861 223223